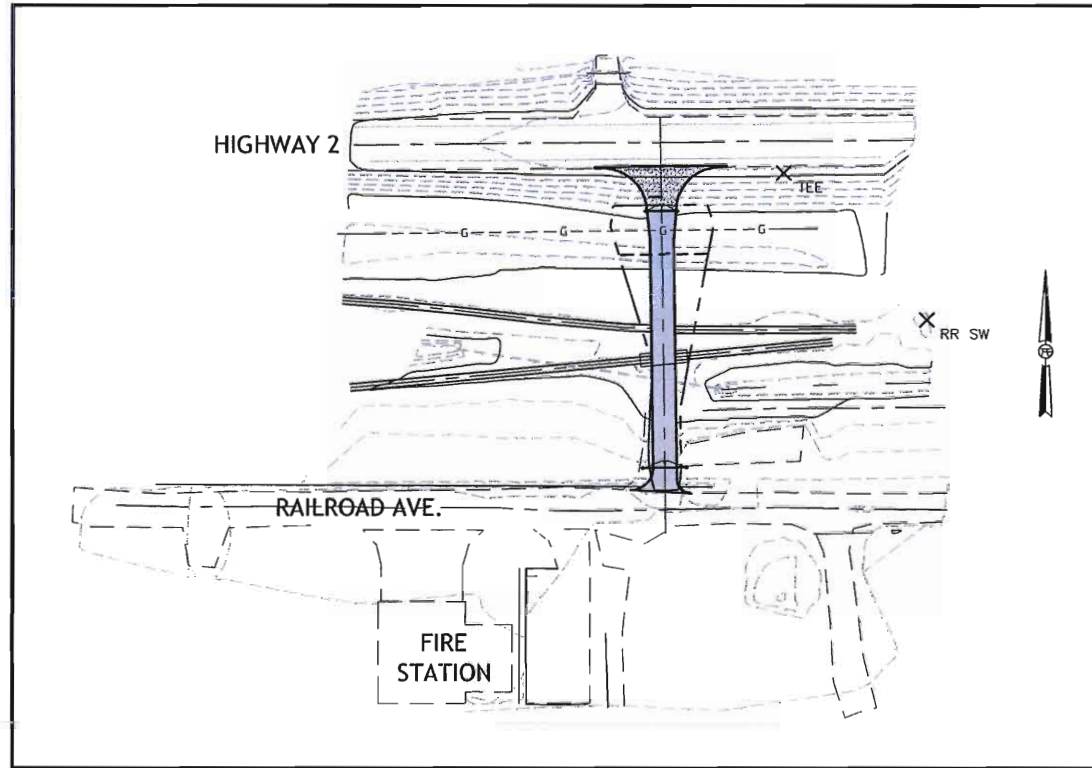
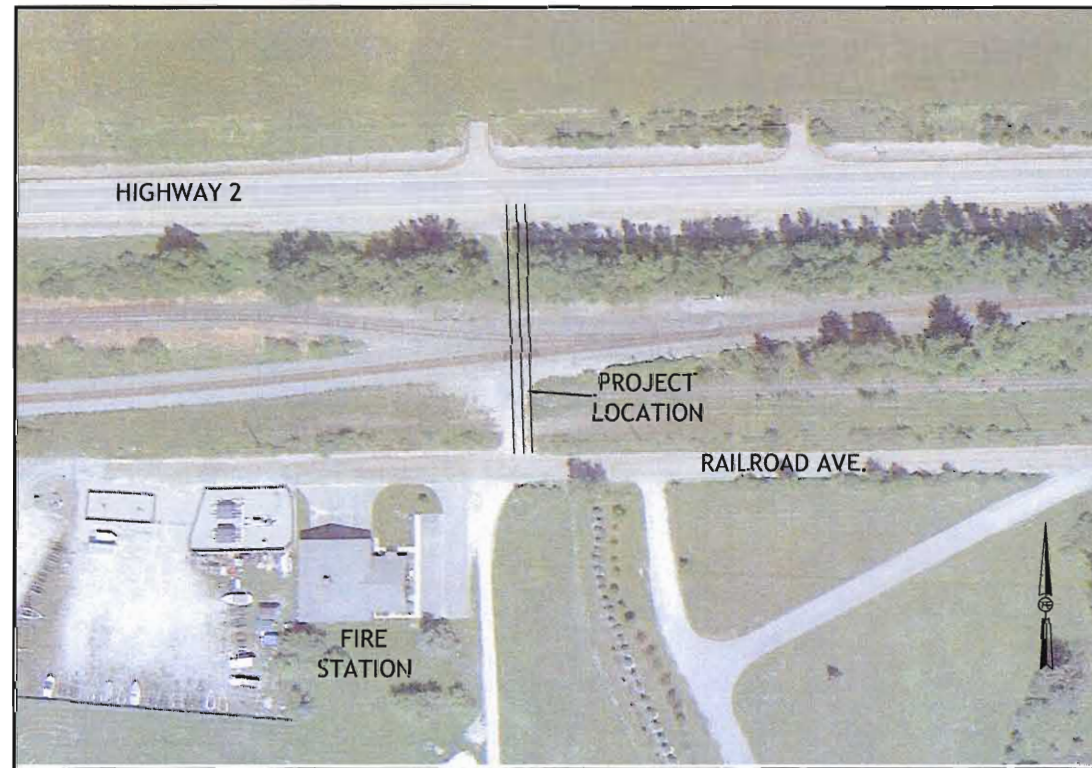


T:\PROJECTS_City of Dover\14.152 West Side Access\dwg\14.152Base.dwg, 1. Title Sheet, 3/5/2015 9:27:41 AM, Kyocera CS-C3232 (KPD)

T:\PROJECTS_City of Dover\14.152 West Side Access\dwg\14.152Base.dwg
5 March 2015



SITE
NTS



VICINITY MAP
NTS

West Side Access - City of Dover Construction Plans

SW Sec. 30, Twp. 57 N., R. 4 W., B.M.
City of Dover, Bonner County, Idaho

OWNER
City of Dover
P.O. Box 115
Dover, ID. 83825

ENGINEER
TATE
ENGINEERING INC.



1103 N. 4th Street Coeur d' Alene Idaho,
83814 (208)676-8708 FAX: (208)667-2129
E-MAIL: rtate@tate-eng.com

INDEX OF SHEETS

- 1. Title Sheet
- 2. Overview Plan
- 3. Plan / Profile
- 4. Details

NOTE

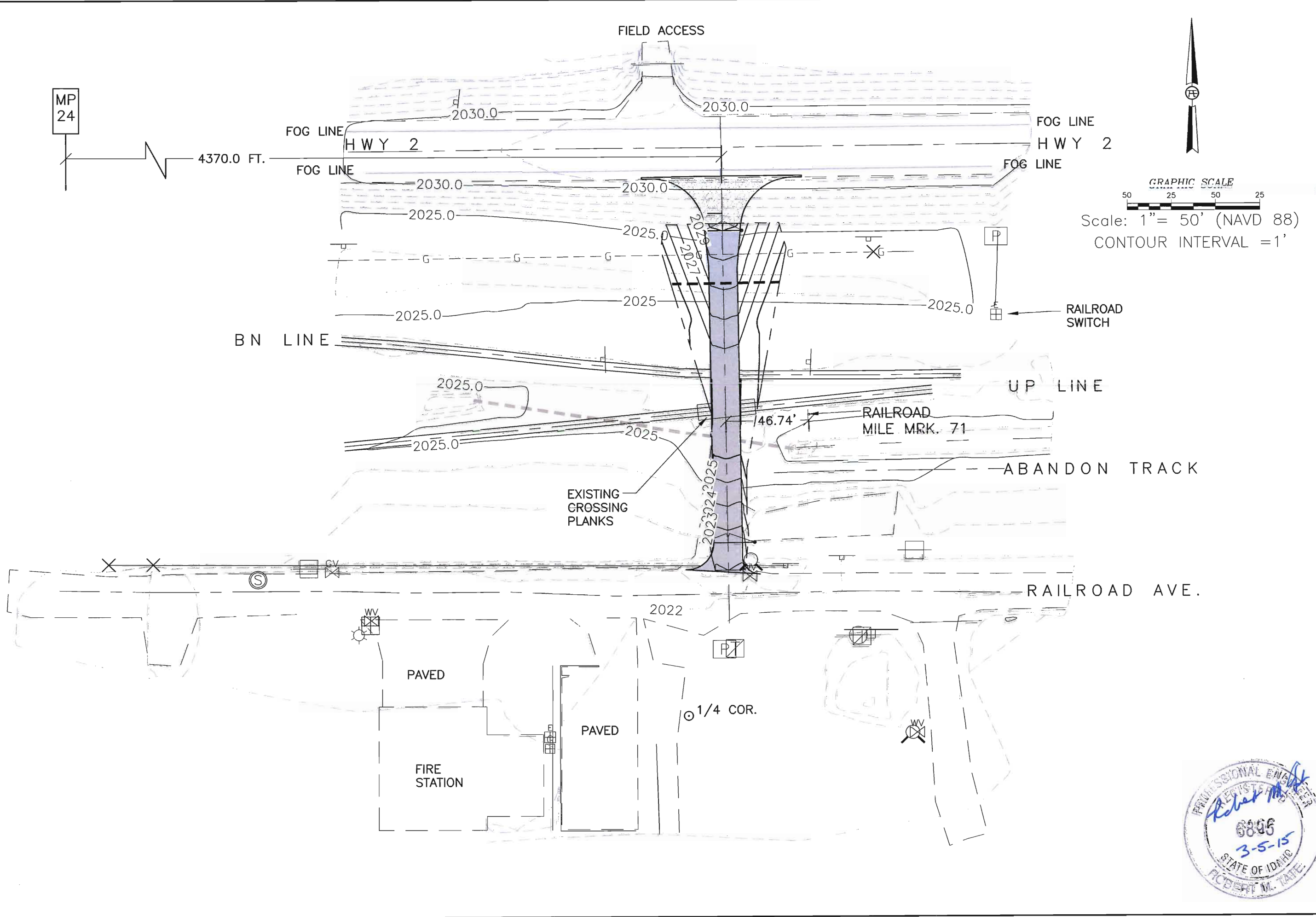


THE LOCATION OF ALL EXISTING UNDERGROUND UTILITIES IS SHOWN IN AN APPROXIMATE WAY ONLY. THE CONTRACTOR SHALL DETERMINE THE EXACT LOCATION OF ALL EXISTING UTILITIES BEFORE COMMENCING WORK. HE AGREES TO BE FULLY RESPONSIBLE FOR ANY AND ALL DAMAGES WHICH MIGHT BE OCCASIONED BY HIS FAILURE TO EXACTLY LOCATE AND PRESERVE ANY AND ALL UNDERGROUND UTILITIES.

CALL 48 HOURS BEFORE YOU DIG
CALL 811



01/2007(1A)E-02



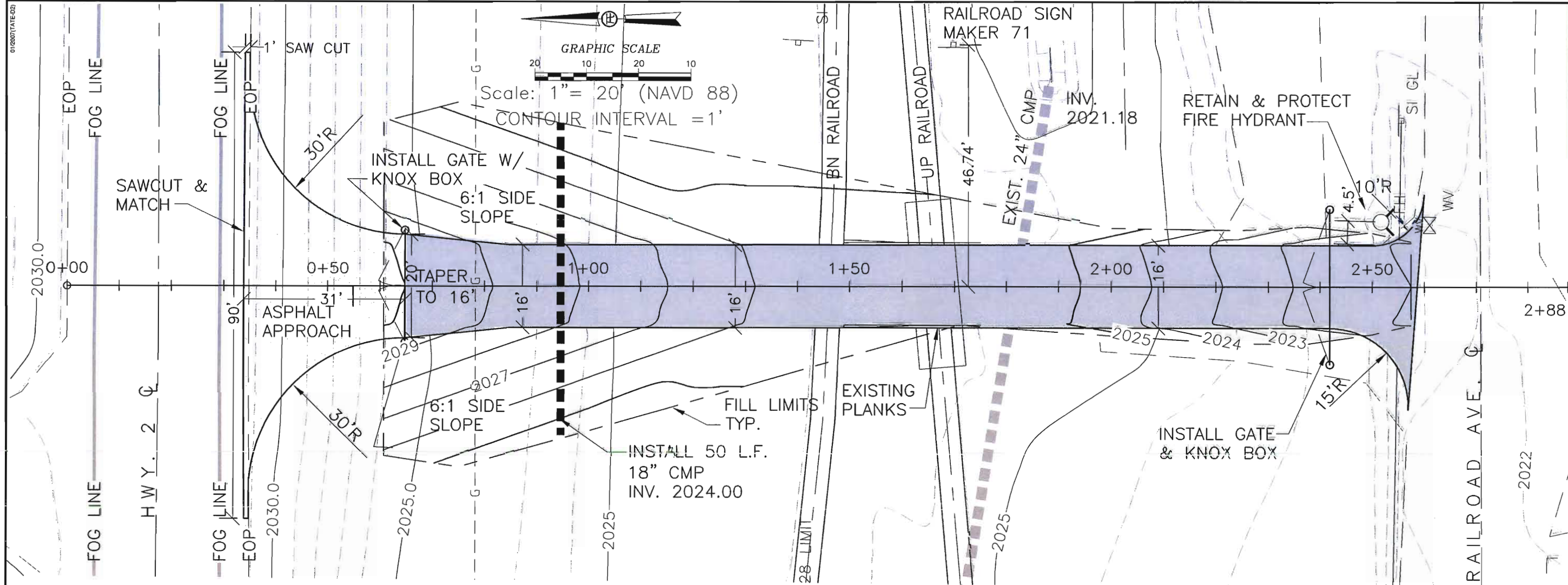
City of Dover :: West Side Access
 SW Sec. 30 & NW Sec. 31, Twp. 57 N., R. 4 W, B.M.
 City of Dover, Bonner County, Idaho
 Overview Plan

PROJECT: 14.152
DRAWING: 14.152BASE
DESIGN BY: RMT
DRAWN BY: dps
CHK. BY: RMT
LAST EDIT DATE: 3/5/15

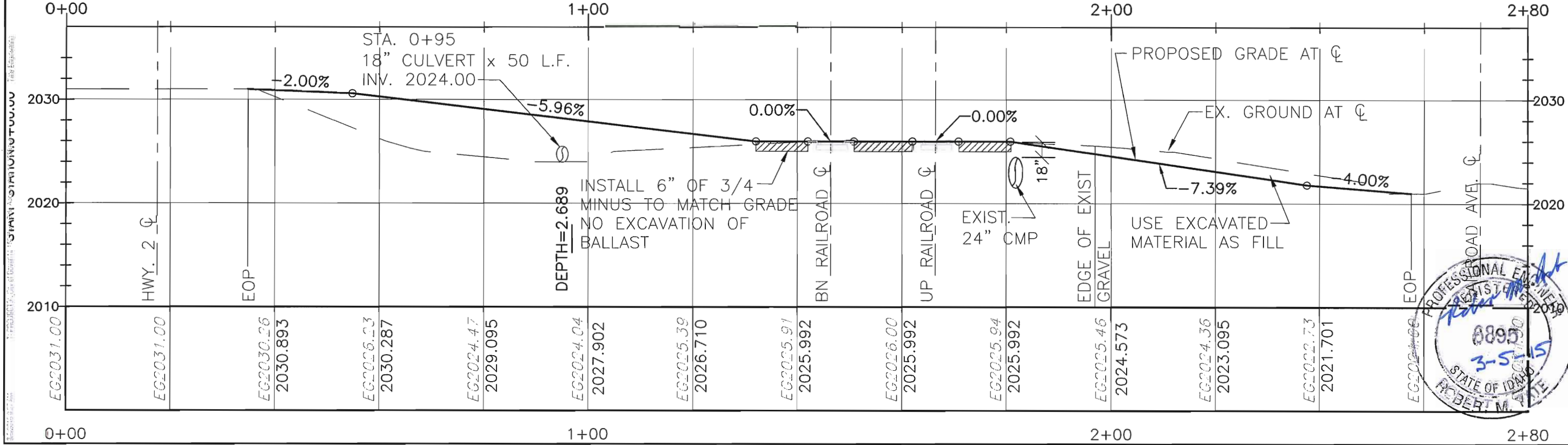
REUSE OF DRAWINGS AND THE IDEAS AND DESIGNS INCORPORATED HEREIN AS AN INSTRUMENT OF PROFESSIONAL SERVICE IS THE PROPERTY OF TATE ENGINEERING, INC. NO PART OF THIS PROJECT WITHOUT THE EXPRESS WRITTEN AUTHORIZATION OF TATE ENGINEERING, INC.

NO.	DATE	REVISION

TATE ENGINEERING
 1105 N. 4th Street
 Coeur d'Alene
 Idaho, 83814
 (208) 676-8708
 FAX: (208) 667-2129
 E-MAIL: tate@tate-eng.com



Profile View of Access
Station



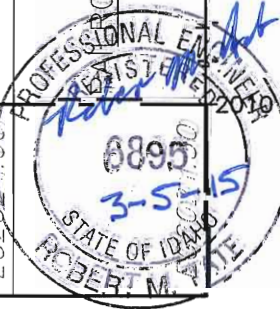
City of Dover - West Side Access
SW Sec. 30 & NW Sec. 31, Twp. 57 N., R. 4 W, B.M.
City of Dover, Bonner County, Idaho
Plan/Profile

PROJECT:	14.152
DRAWING:	14.152-003
DESIGN BY:	RLT
DRAWN BY:	ops
CHK BY:	RLT
LAST EDIT DATE:	3/5/15

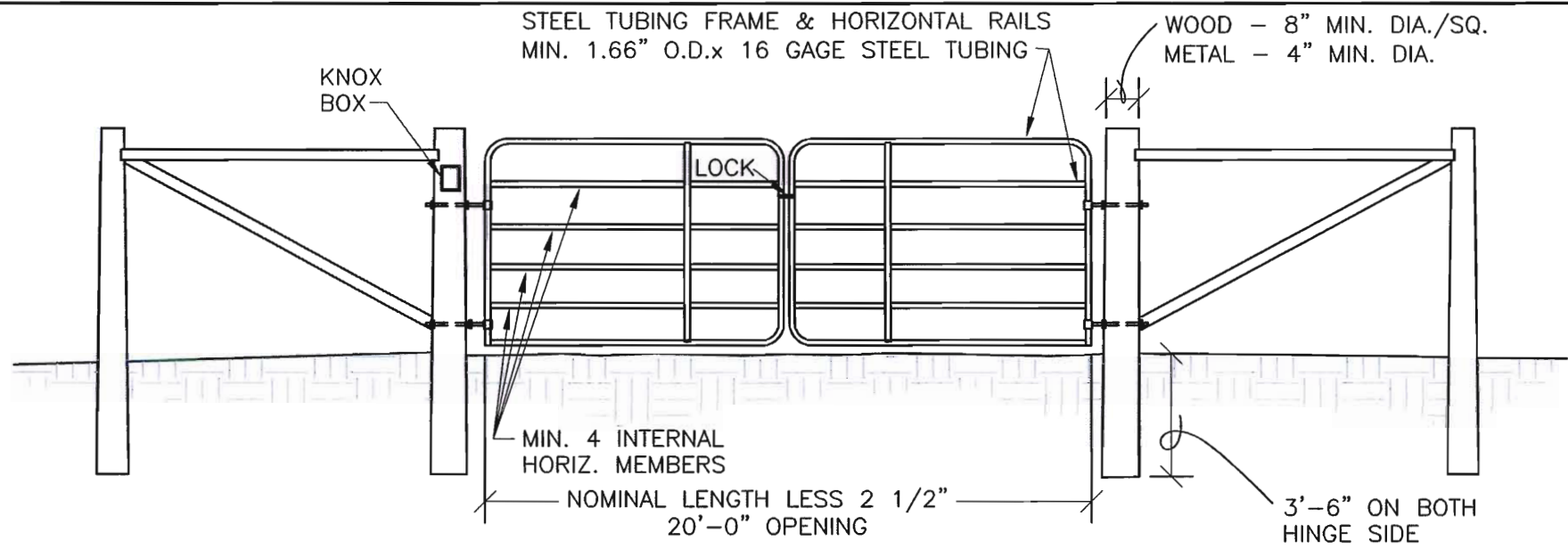
REUSE OF DRAWINGS AND THE IDEAS AND DESIGNS INCORPORATED HEREIN IS THE PROPERTY OF TATE ENGINEERING, INC. AND IS NOT TO BE USED IN WHOLE OR PART, FOR ANY OTHER PROJECT WITHOUT THE EXPRESS WRITTEN AUTHORIZATION OF TATE ENGINEERING, INC.

REVISION	DATE	BY	DESCRIPTION

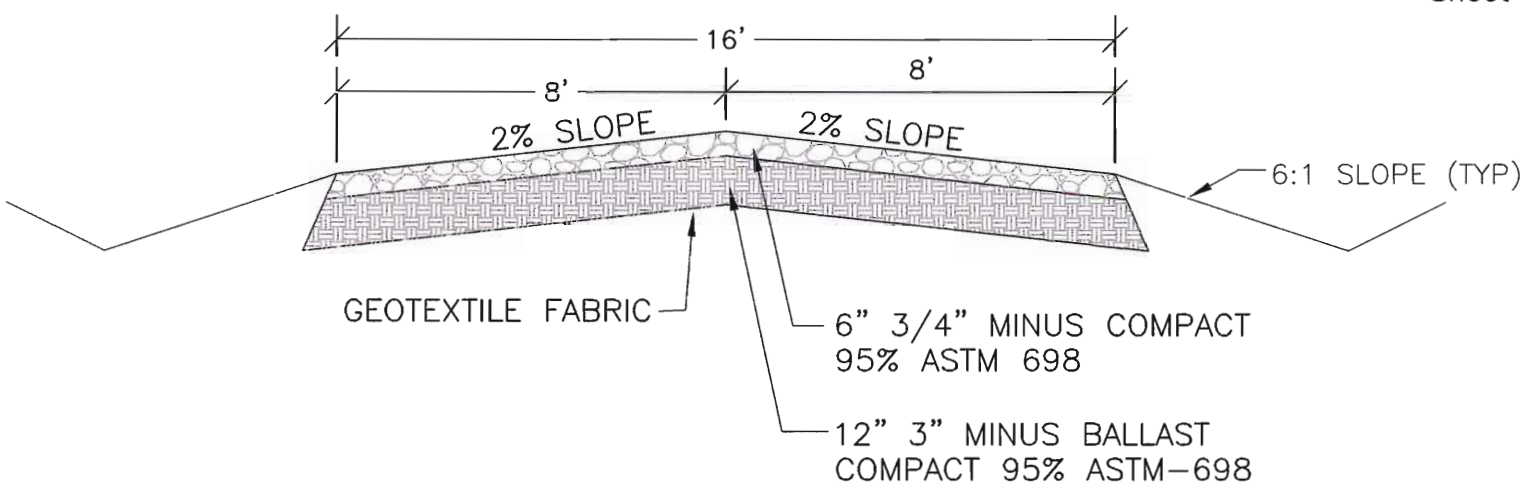
TATE ENGINEERING
1103 N. 4th Street
Coeur d'Alene
Idaho, 83814
(208) 676-8708
FAX: (208) 667-2129
E-MAIL: tate@tate-eng.com



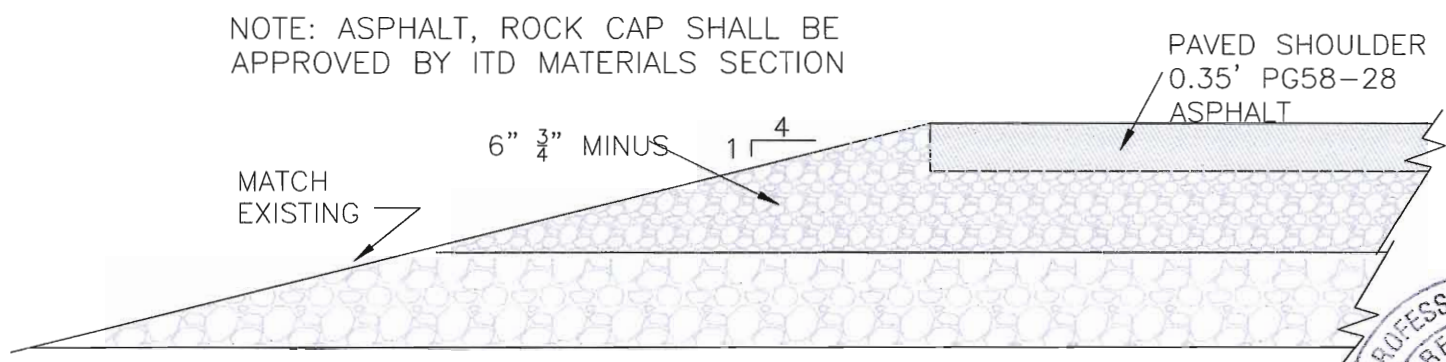
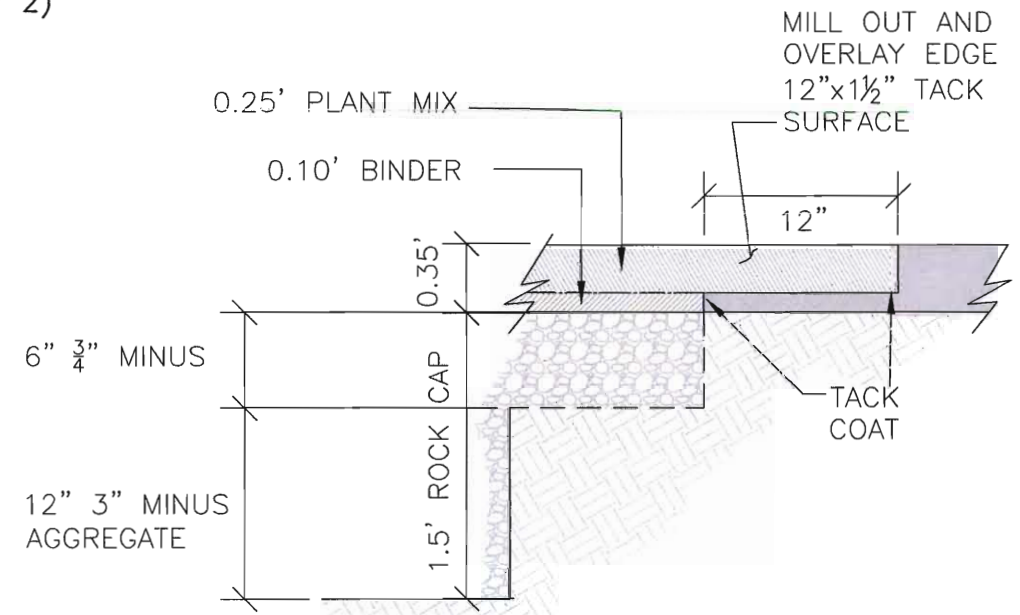
01/2007/TATE.DWG
T:\PROJECTS_City of Dover\14.152 West Side Access\dwg\14.152Base.dwg
03/05/2015 09:27:01 AM



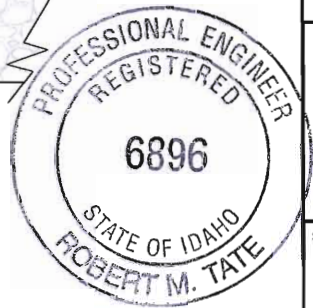
TYPE 1A GATE
NOT TO SCALE
(Per Idaho Transportation Department Std. Dwg. F-2-C, Sheet 1 of 2)



TYPICAL SECTION
NOT TO SCALE



TYPICAL PAVEMENT SECTION
SCALE: 1"=1'-0"



City of Dover - West Side Access
SW Sec. 30 & NW Sec. 31, Twp. 57 N., R. 4 W, B.M.
City of Dover, Bonner County, Idaho
Details

PROJECT: 14.152	DESIGN BY: RMT	CHK BY: RMT	LAST EDIT DATE: 3/5/15
DRAWING: 14.152	DESIGN BY: RMT	CHK BY: RMT	LAST EDIT DATE: 3/5/15
DRAWN BY: RMT	DESIGN BY: RMT	CHK BY: RMT	LAST EDIT DATE: 3/5/15
REVISION	BY	DATE	

TATE ENGINEERING
1103 N. 4th Street
Coeur d'Alene
Idaho, 83814
(208)676-8708
FAX: (208)667-2129
E-MAIL: r.tate@tate-eng.com